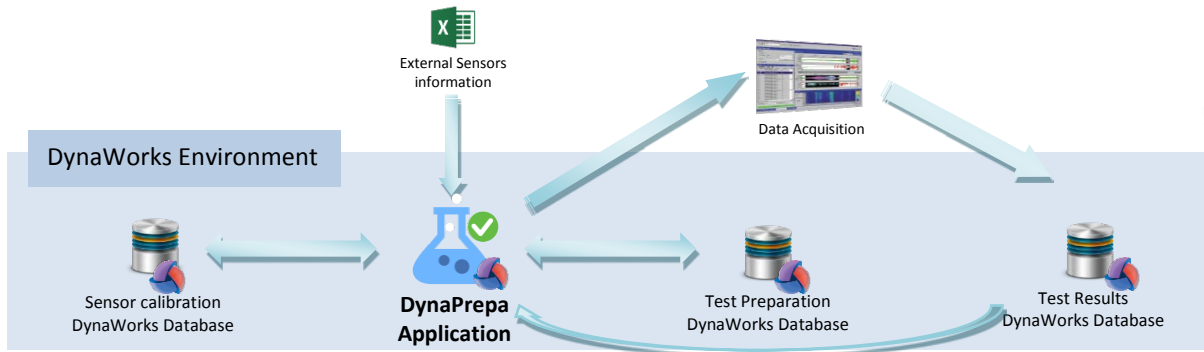


DynaPrepa Application Specifications



Manage the test instrumentation

Configure the data acquisition system

Collect the test results

CONTACT US

> Europe

TOULOUSE

Intespace
2 rond-point Pierre Guillaumat - CS 64356
31029 TOULOUSE CEDEX 4 - FRANCE
Tél: +33 (0) 5 61 28 11 11
Fax: +33 (0) 5 61 28 11 12

ELANCOURT

Intespace
1 Bd. Jean Moulin - ZAC. de la clé St Pierre
Métropole 78990 ELANCOURT - FRANCE
Tél: +33 (0) 5 61 28 11 11
Fax: +33 (0) 5 61 28 11 12

TORINO

PLM Systems S.r.l.
Via Perugia, 24
10152 - Torino (TO)
Tel: +39.011.4242118
Fax: +39.011.4071960
Member of the ALTEA Network Group

> North America

HERNDON, VA

Airbus Group Inc.
One Global View
2550 Wasser terrace, suite 9000
Herndon, VA 20171
United States of America
Tel: +1(703) 466 5803

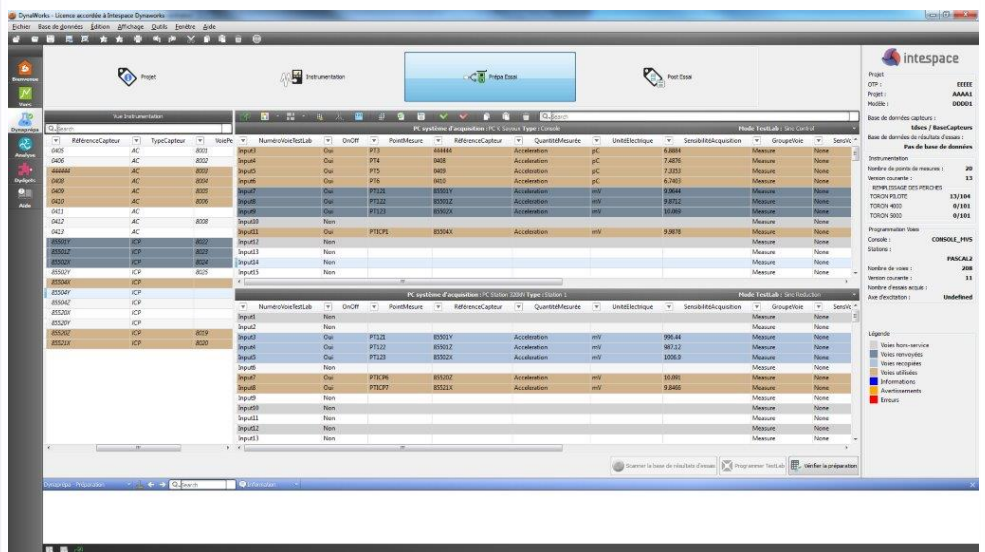
> Asia

BEIJING

Mestime Information Technology Co.
Room 206A
Yingchuangdongli Tower E
No. 1 Shangdi East Road,
Beijing, Haidan District 100085
China
Tel: +86-10-82897169
Mobile: +86-13-801030932

CHENNAI

ADAMS TECHNOLOGIES PVT. LIMITED
27 (old N° 16) Lakshmanan Street,
Mahalingapuram, Chennai – 600034 India
Tel: +91 44 28173711 / 4206 8668 / 28171631
Fax: +91 44 2817 2676



DynaPrepa is an optional DynaWorks V7 plugin dedicated to the test preparation workflow. Running within the DynaWorks framework it leverages all the DynaWorks data management and processing features.

DynaPrepa offers four main functions:

- Define test projects into a dedicated centralized or local preparation database.
- Describe the test instrumentation by selecting a list of sensors from the corporate sensor inventory managed in a DynaWorks database or by using external sensors characteristics. Associate a sensor to a measurement point and define its characteristics (direction, associated cable ...). Select test hardware (test bench, acquisition computers, and cables). Associate cables to measurement points.
- Map each measurement point to the right hardware connector to finally send the channel setup to the controller and data acquisition software.
- Collect the test results back into the test DynaWorks database

DynaPrepa can be used in conjunction with the GESCAO Application (sensor stock management), DynaWorks for post processing and the Comet application for the report generation.

The current version of the DynaPrepa application configures the LMS Test.Lab 14A SL2 control and acquisition software, when connected to the same enterprise network.

Additional data acquisition systems can be plugged upon request.

The main features of the DynaPrepa current version cover the 4 main steps of the test preparation workflow:

Test Project Management

- Multiple test project management
- Create, Modify and Edit test projects
- Define test project characteristics with test facility, target test result database, test operators, customer...
- Export test project list to MS Excel

Test Instrumentation

- Access to the sensors calibration database (corporate or local)
- Show project's used sensors
- Filtering and search for specific sensor in the sensor database
- Import and export of MS Excel external instrumentation
- Automatic (drag and drop) and manual creation of measurement point
- Instrumentation version management (Load of a previous instrumentation from another test or an older version from the current test)
- Internal/External sensor selection
- Selection of the type of command/control system, data acquisition systems, bays and pole(can be customized)
- Automatic poles attribution
- Instrumentation verification

Test Preparation

- Multiple representation modes (TestLab or Test bench oriented views)
- Instrumentation version management
- Copied channel
- Axe of excitation definition
- Filtering and search for specific sensor in the sensor database
- Automatic inputs attribution
- Test preparation check
- Instrumentation vs acquisition card check
- Data acquisition set up (LMS only in that version)

Post Test

- Test result collection

In addition, DynaPrepa provides common features like:

- Errors detections for each step of the workflow
- Information panel
- Assistants (tooltips)
- Designed for test operators (IHM, workflow, rules...)